

PLAY AREA & SITE FURNITURE MATERIAL REFERENCE & DESCRIPTION



BOLLARDS TO GREEN OPEN SPACES OR SIMILAR APPROVED



BOLLARDS TO OPEN SPACES OR SIMILAR APPROVED



BOLLARDS TO STREETScape OR SIMILAR APPROVED



BIKE STANDS OR SIMILAR APPROVED

- Root fixed. Foundation to engineer's specification.



LITTER BIN TO OPEN SPACES OR SIMILAR APPROVED



LITTER BIN TO PEDESTRIAN AREAS OR SIMILAR APPROVED



BENCH TO PUBLIC AREAS OR SIMILAR APPROVED



BENCH TO PUBLIC AREAS OR SIMILAR APPROVED



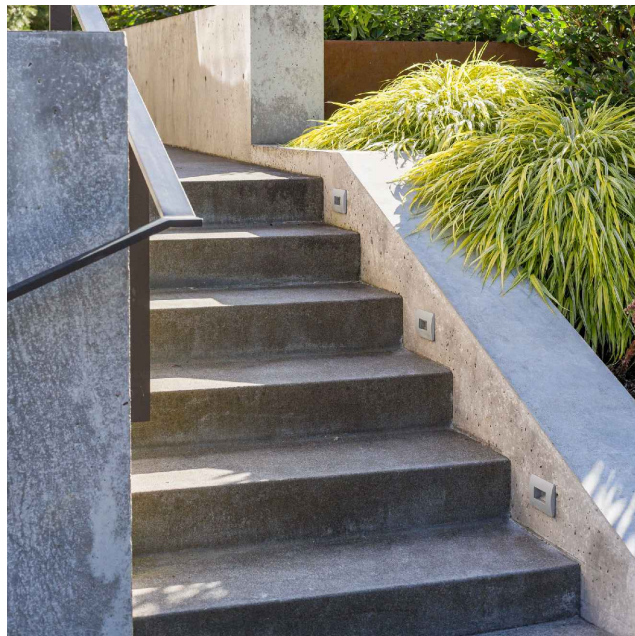
BENCH TO PUBLIC AREAS OR SIMILAR APPROVED



BENCH TO PUBLIC AREAS OR SIMILAR APPROVED



PICNIC TABLES TO PUBLIC AREAS OR SIMILAR APPROVED



IN-SITU CONCRETE STEPS OR SIMILAR APPROVED

- To engineer's detailed design & specification
- HANDRAIL**
- 30mm ø dim galvanized mild steel handrail on one side powder coated RAL 7022 umbra grey or similar approved



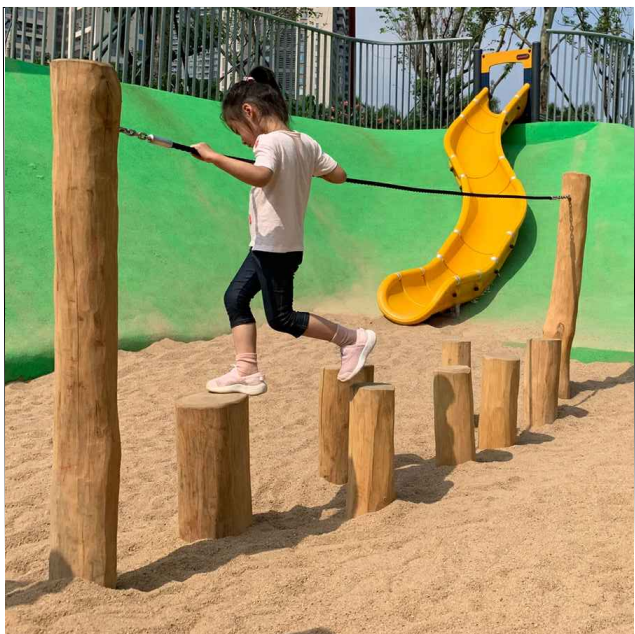
NATURAL PLAY OR SIMILAR APPROVED



DOUBLE BALANCE BEAM OR SIMILAR APPROVED



WATERLILIES BALANCE POSTS OR SIMILAR APPROVED



THE BALANCE POSTS WITH ROPE OR SIMILAR APPROVED



SEA-SAW OR SIMILAR APPROVED



LITTLE SPIDER SWING OR SIMILAR APPROVED



WOODEN DOUBLE SWINGS OR SIMILAR APPROVED



WOODEN SPRING OR SIMILAR APPROVED

NOTE  
ALL DIMENSIONS TO BE CHECKED ON SITE  
NO DIMENSIONS TO BE SCALED FROM THIS DRAWING  
THIS DRAWING IS TO BE READ IN CONJUNCTION WITH  
RELEVANT CONSULTANT'S DRAWINGS  
NO PART OF THIS DOCUMENT MAY BE RE-PRODUCED OR  
TRANSMITTED IN ANY FORM OR STORED IN ANY RETRIEVAL  
SYSTEM OF ANY NATURE WITHOUT THE WRITTEN PERMISSION  
OF THE LANDSCAPE ARCHITECT AS COPYRIGHT HOLDER EXCEPT  
AS AGREED FOR USE ON THE PROJECT FOR WHICH THE  
DOCUMENT WAS ORIGINALLY ISSUED

APPLICANT: LISCOVE LIMITED

ARCHITECTS: MCORM ARCHITECTS

REVISIONS:

|         |          |            |            |
|---------|----------|------------|------------|
| Job No. | 30A6A    | Drawn By   | AC, BA, RM |
| Dwg No. | L1_003_2 | Checked By | JM         |
| Scale   | N/A      | Date       | 2024       |

JOB DESCRIPTION

|         |  |
|---------|--|
| Site    | KILTERNAN                                |
| Project | KILTERNAN VILLAGE                        |
| Title   | HARD MATERIALS SCHEDULE:<br>SHEET 2 OF 2 |



**NMP**  
Niall Montgomery + Partners

Architects 33 Rock Road, Williamstown, Blackrock, Co. Dublin  
Telephones : 2121 800 Fax :2121 007 E mail : info@nmp.ie